

The Hamilton

Plots: 211 & 212

(Elevations & handings may vary per plot)

The Hamilton is a 4/5 bedroom detached home with integral garage.

Perfect for a family, this stunning detached property is entered through a vestibule into a spacious hallway.

To the left is an expansive lounge with French doors to the south facing garden, and to the back of the property is a fabulous, open plan kitchen and dining area also with French doors to the garden. There is access to the integral garage and utility room, a separate dining room or 5th bedroom and a downstairs WC, with the potential for a bath or shower.

Upstairs, there are four large double bedrooms, most with fitted wardrobes, as well as an en-suite and walk-in wardrobe off the master bedroom. Additionally, there is a further family bathroom.

The home has gas central heating.

Are you interested in this development? Enquire now.

T: 01896 800185

E: leethaugh@rettie.co.uk

W: hudsonhirsell.com



- Spacious Kitchen/Dining Room
- Ample storage
- Views to the Cheviots
- Lounge with French doors to garden
- 4/5 Bedrooms
- Master bedroom with En-suite
- Private garden
- Integral garage

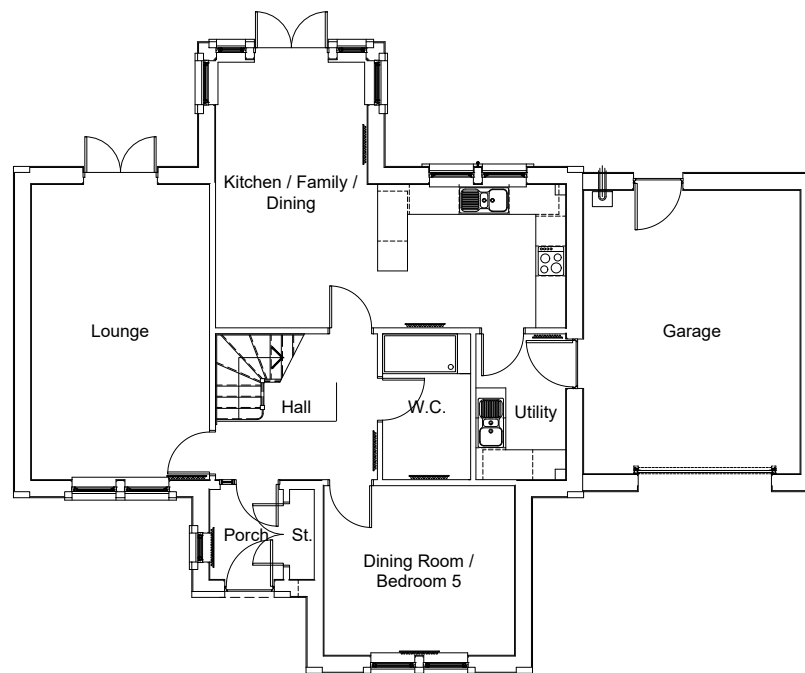
The Hamilton

Plots: 211 & 212

(Handings may vary per plot)

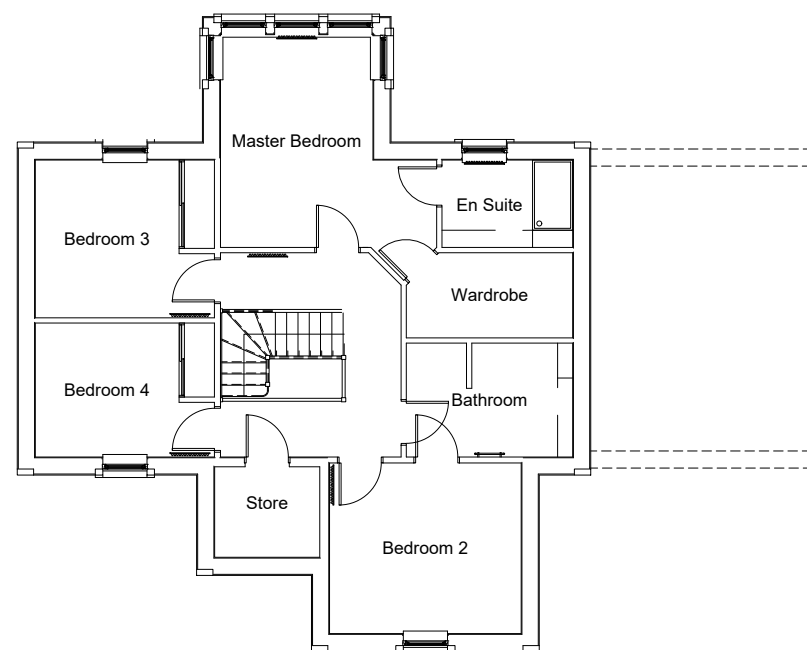
Ground Floor

Porch:	1.35 x 1.86m
Lounge:	3.63 x 6.00m
Utility:	1.85 x 2.95m
WC:	1.85 x 2.95m
Kitchen/Dining:	7.08 x 5.39m
Dining/Bed 5	3.90 x 3.46m
Garage	4.40 x 5.76m



First Floor

Bedroom 1:	4.85 x 4.35m
En-suite:	2.66 x 1.80m
Wardrobe:	3.37 x 1.73m
Bedroom 2:	3.90 x 3.52m
Bedroom 3:	2.92 x 3.20m
Bedroom 4:	2.92 x 2.73m
Bathroom:	3.37 x 2.30m



Accommodation of approximately 177 sq ms or 1,905 sq ft. Excludes garage.